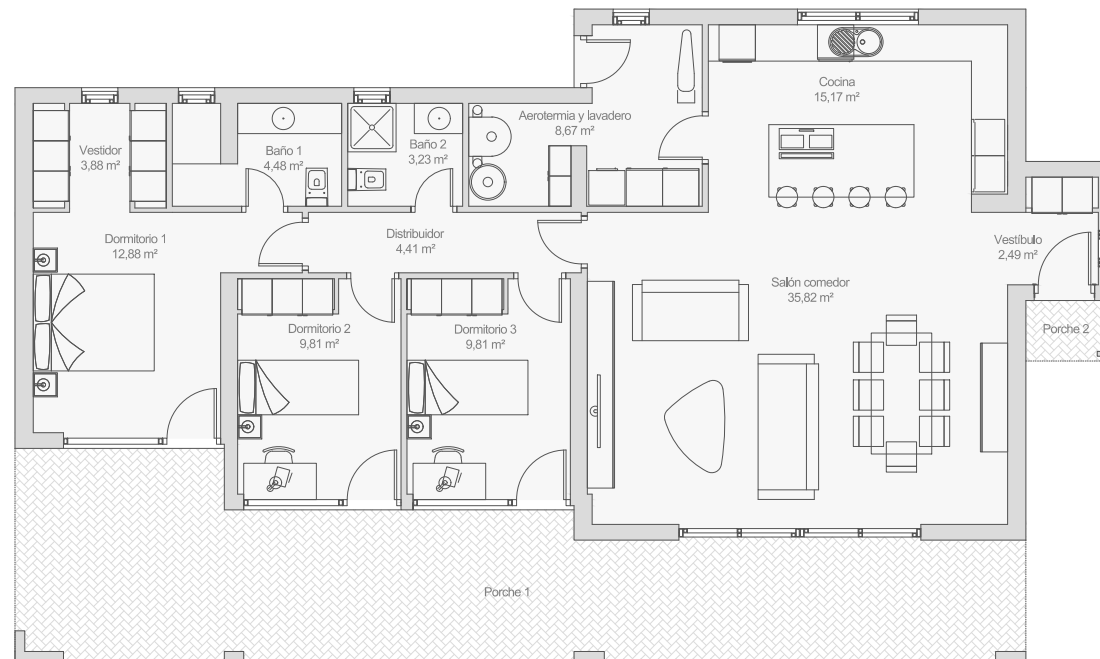


# Modelo Formentera

SUPERFÍCIE CONSTRUIDA TOTAL DE VIVIENDA: 130 m<sup>2</sup>



## SUPERFICIES ÚTILES

Vestibulo distribuidor	2,49 m <sup>2</sup>
Salón comedor	35,82 m <sup>2</sup>
Cocina	15,17 m <sup>2</sup>
Aerotermia y lavadero	8,67 m <sup>2</sup>
Distribuidor	4,41 m <sup>2</sup>
Dormitorio 1	12,88 m <sup>2</sup>
Vestidor	3,88 m <sup>2</sup>
Baño 1	4,48 m <sup>2</sup>
Dormitorio 2	9,81 m <sup>2</sup>
Dormitorio 3	9,81 m <sup>2</sup>
Baño 2	3,23 m <sup>2</sup>

**SUPERFICIE ÚTIL TOTAL 110,75 m<sup>2</sup>**

## SUPERFICIES CONSTRUIDAS

Sup. construida vivienda	130 m <sup>2</sup>
Sup. construida porches	42,90 m <sup>2</sup>

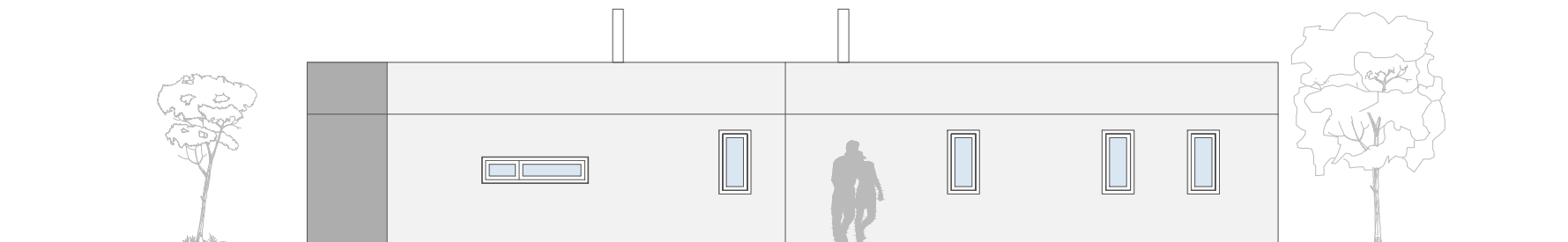
**SUP. CONSTRUIDA TOTAL 172,90 m<sup>2</sup>**

THE CONCRETE  
HOME

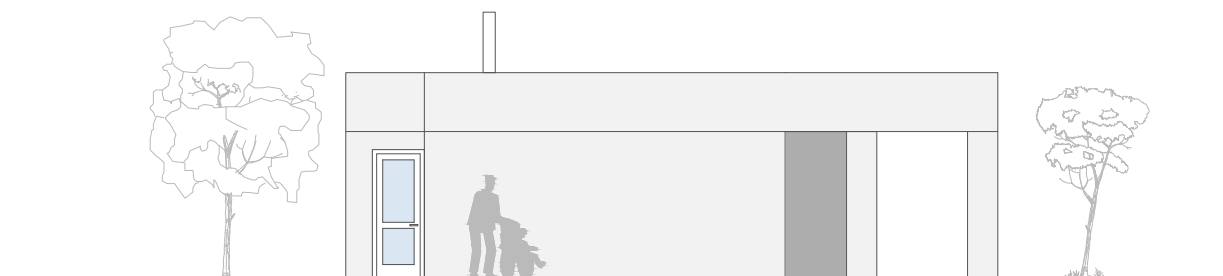


# Modelo Formentera

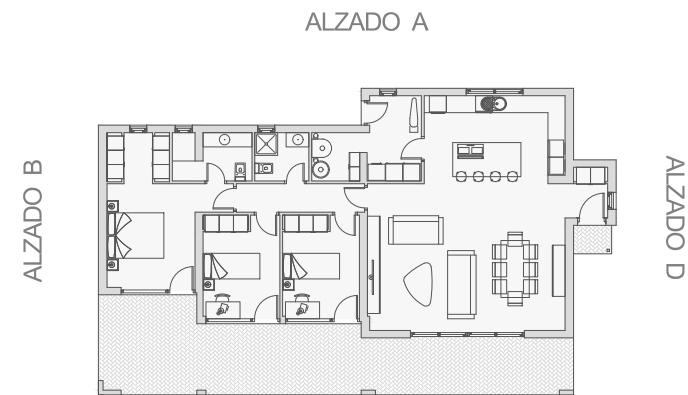
SUPERFÍCIE CONSTRUIDA TOTAL DE VIVIENDA: 130 m<sup>2</sup>



ALZADO A



ALZADO B



ALZADO A

ALZADO B

ALZADO D

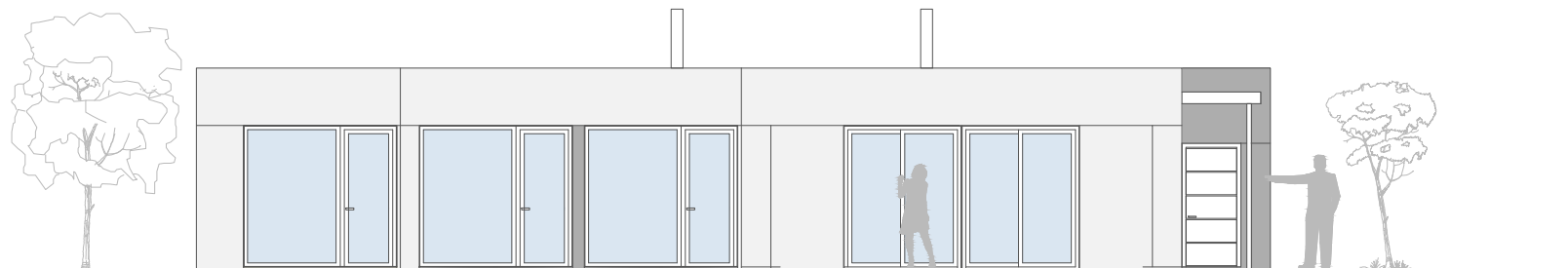
ALZADO C

THE CONCRETE  
HOME

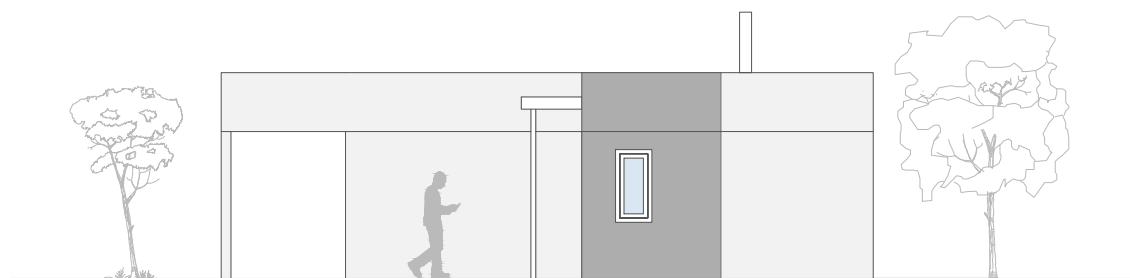


# Modelo **Formentera**

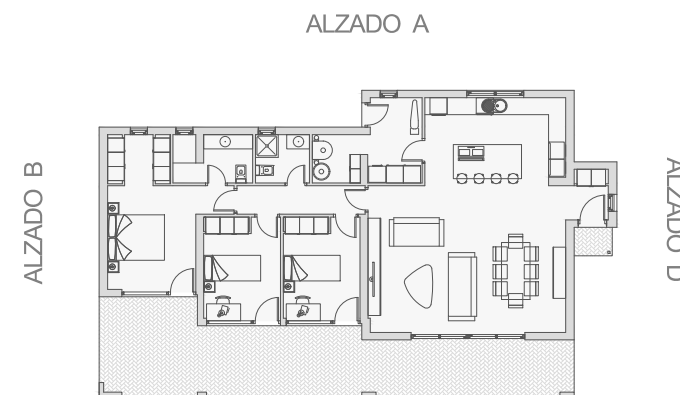
SUPERFÍCIE CONSTRUIDA TOTAL DE VIVIENDA: 130 m<sup>2</sup>



ALZADO C



ALZADO D



ALZADO A

ALZADO B

ALZADO D

ALZADO C

THE CONCRETE  
HOME

