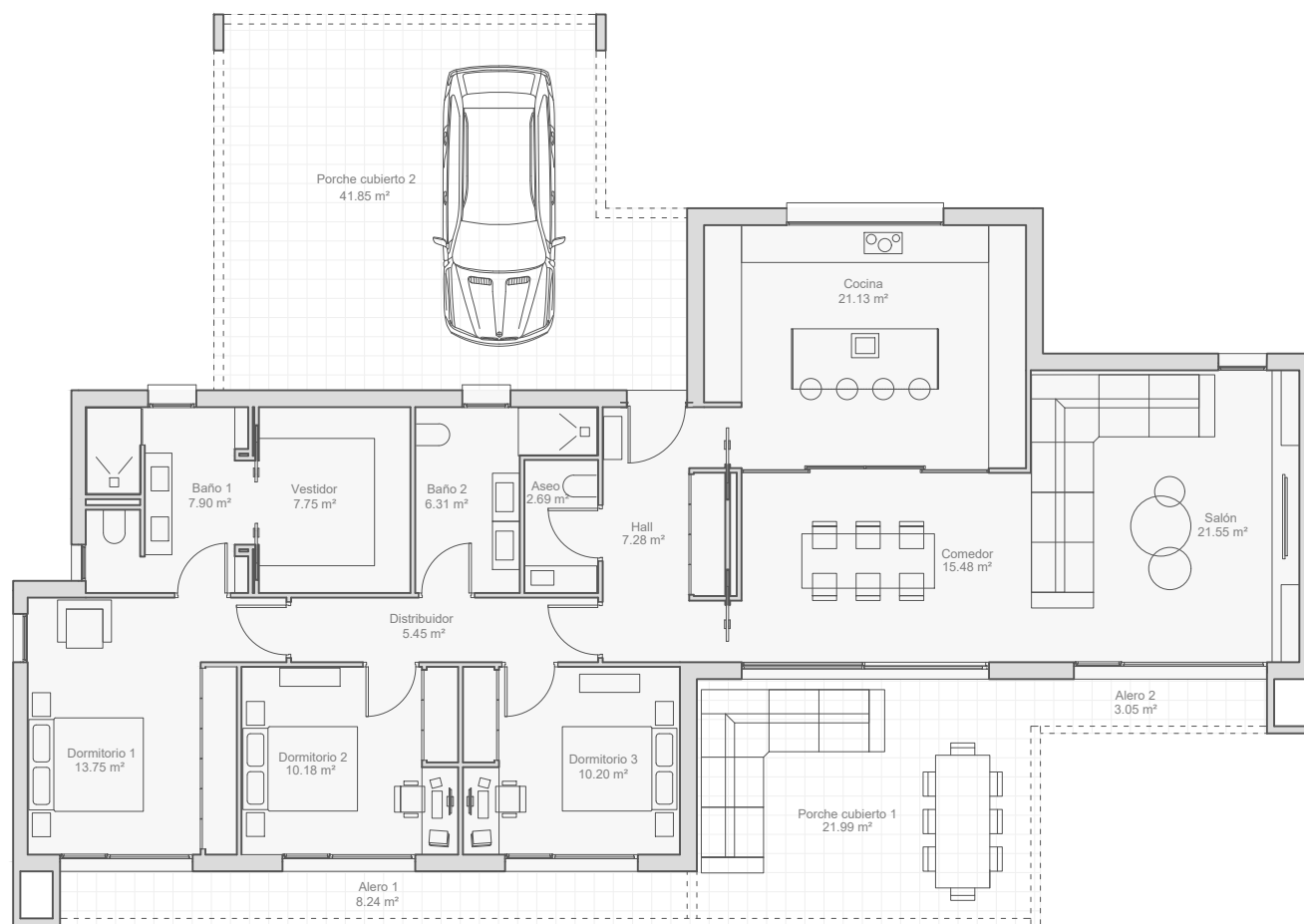


# Modelo Cannes

SUPERFICIE CONSTRUIDA TOTAL: 197 m<sup>2</sup>



## SUPERFICIES ÚTILES

Hall	7,28 m <sup>2</sup>
Salón	21,55 m <sup>2</sup>
Comedor	15,48 m <sup>2</sup>
Cocina	21,13 m <sup>2</sup>
Aseo	2,69 m <sup>2</sup>
Dormitorio 1	13,75 m <sup>2</sup>
Baño 1	7,90 m <sup>2</sup>
Vestidor	7,75 m <sup>2</sup>
Dormitorio 2	10,18 m <sup>2</sup>
Baño 2	6,31 m <sup>2</sup>
Dormitorio 3	10,20 m <sup>2</sup>

**SUPERFICIE ÚTIL TOTAL 124,22 m<sup>2</sup>**

## SUPERFICIES CONSTRUIDAS

Sup. const. planta baja	160,45 m <sup>2</sup>
Sup. const. porches y aleros	36,68 m <sup>2</sup>

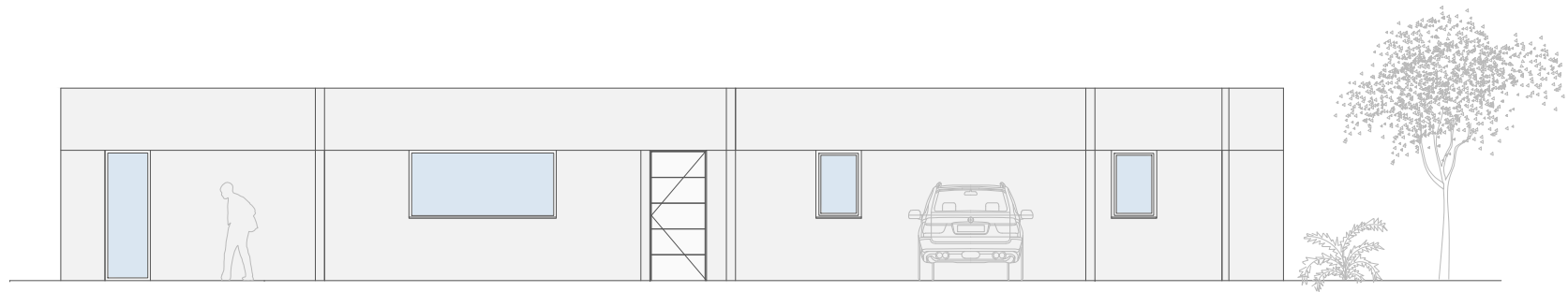
**SUP. CONSTRUIDA TOTAL 197,13 m<sup>2</sup>**

THE CONCRETE  
HOME

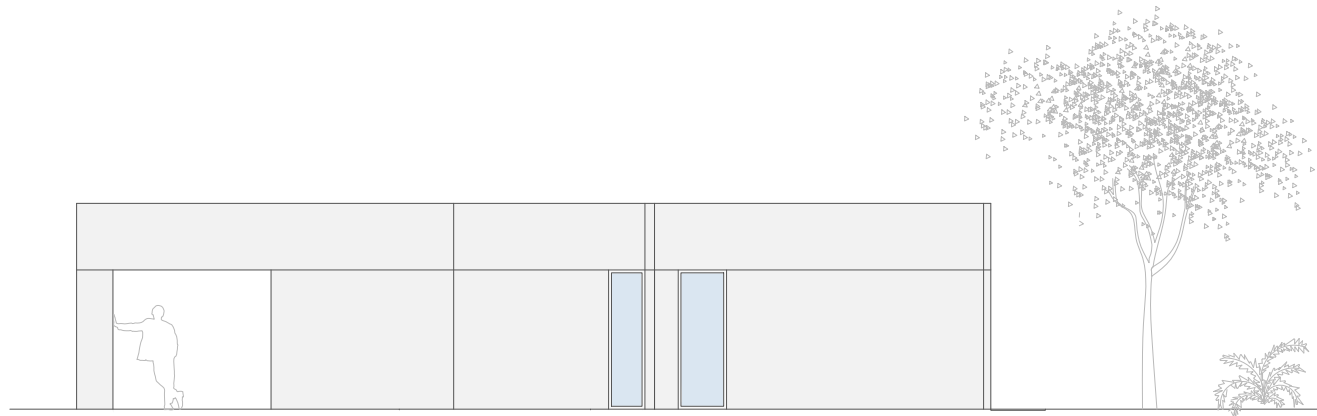


# Modelo Cannes

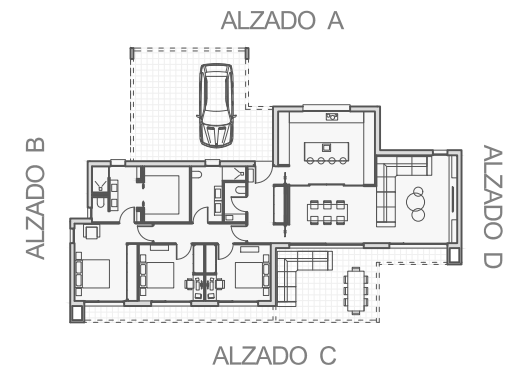
SUPERFÍCIE CONSTRUIDA TOTAL: 197 m<sup>2</sup>



ALZADO A



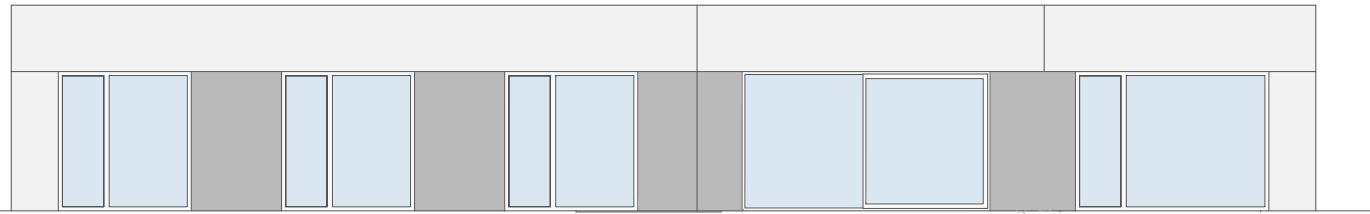
ALZADO B



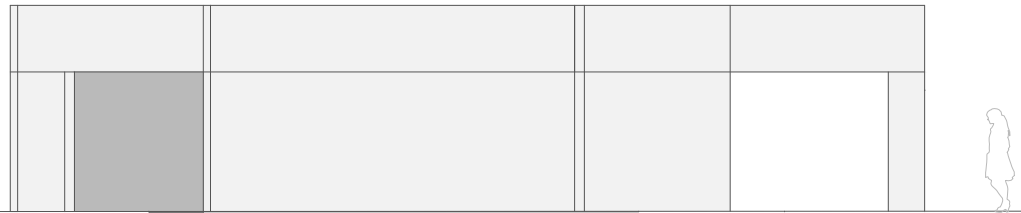
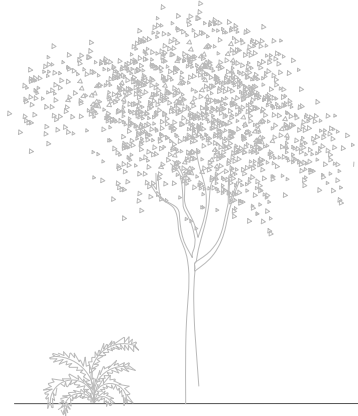
THE CONCRETE  
HOME

# Modelo Cannes

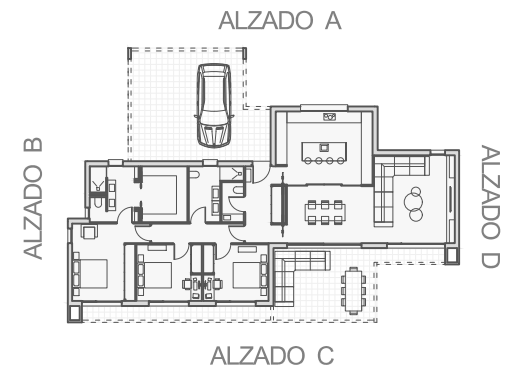
SUPERFÍCIE CONSTRUIDA TOTAL: 197 m<sup>2</sup>



ALZADO C



ALZADO D



THE CONCRETE  
HOME