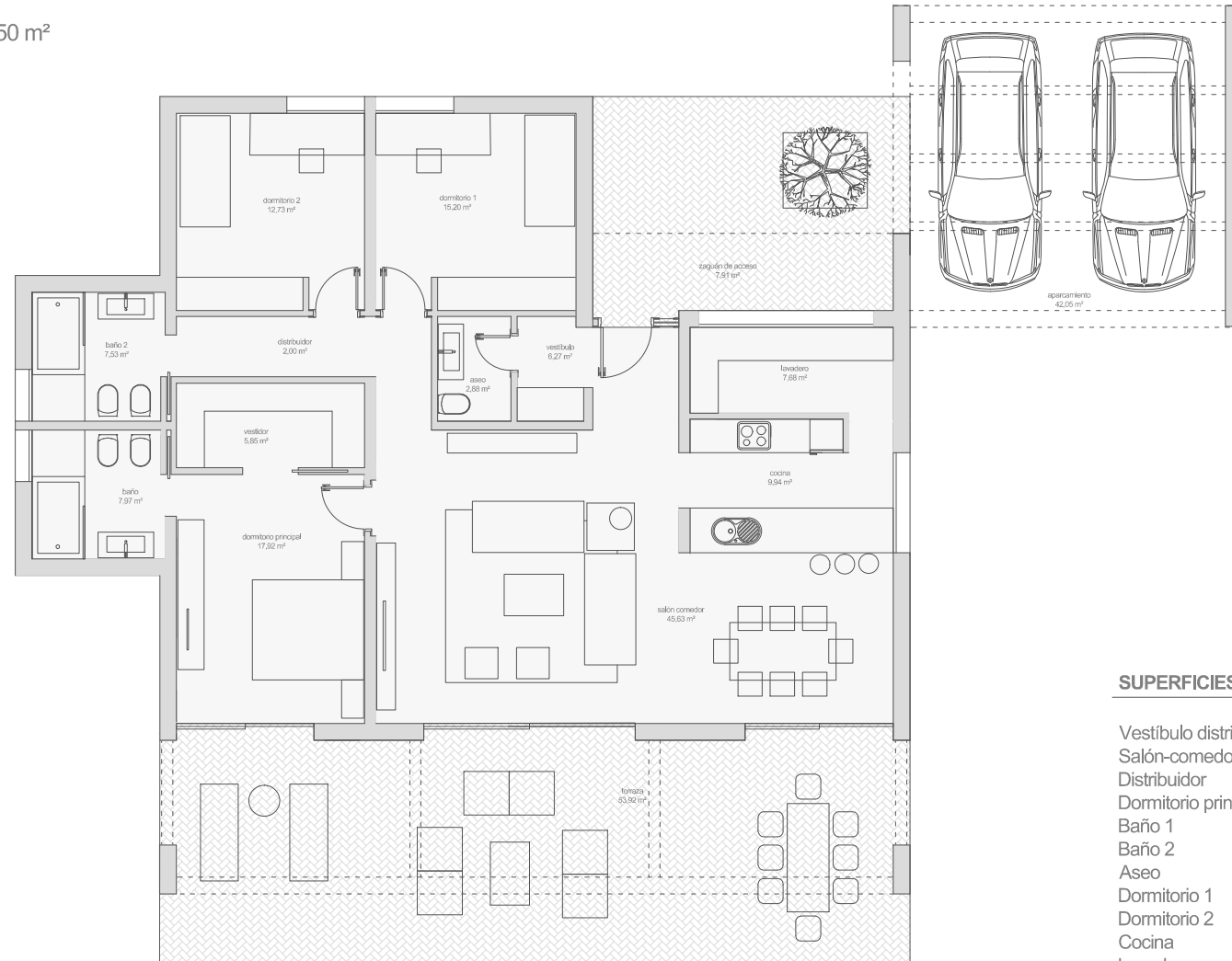


# Modelo **Barcelona**

SUPERFICIE CONSTRUIDA TOTAL: 150 m<sup>2</sup>



## SUPERFICIES ÚTILES

Vestíbulo distribuidor	5,28 m <sup>2</sup>
Salón-comedor	40,59 m <sup>2</sup>
Distribuidor	5,88 m <sup>2</sup>
Dormitorio principal	15,14 m <sup>2</sup>
Baño 1	5,54 m <sup>2</sup>
Baño 2	5,54 m <sup>2</sup>
Aseo	2,48 m <sup>2</sup>
Dormitorio 1	12,69 m <sup>2</sup>
Dormitorio 2	11,92 m <sup>2</sup>
Cocina	8,78 m <sup>2</sup>
Lavadero	5,66 m <sup>2</sup>

**SUPERFICIE ÚTIL TOTAL 119,50 m<sup>2</sup>**

## SUPERFICIES CONSTRUIDAS

Sup. const. planta baja	148,06 m <sup>2</sup>
Sup. const. porches pérgolas	103,88 m <sup>2</sup>

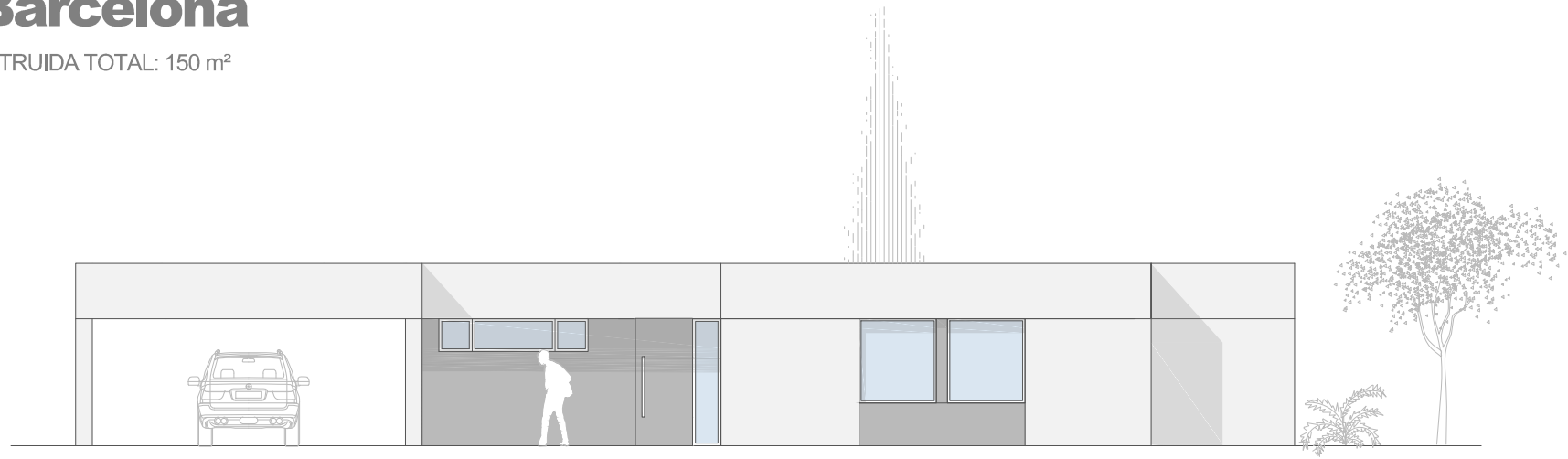
**SUP. CONSTRUIDA TOTAL 251,94 m<sup>2</sup>**

THE CONCRETE  
HOME

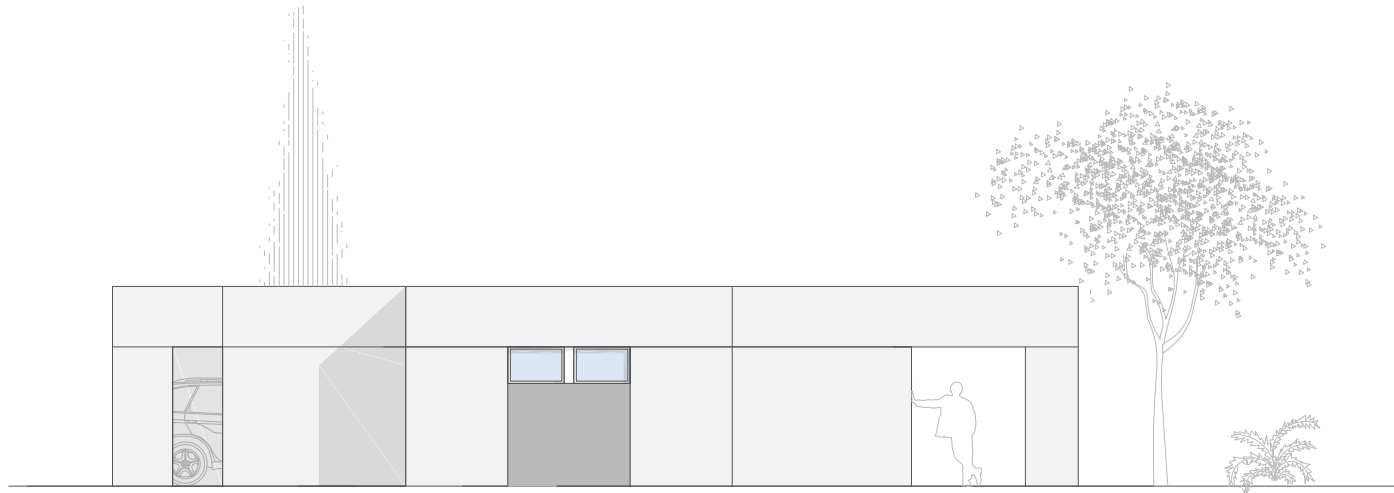


# Modelo **Barcelona**

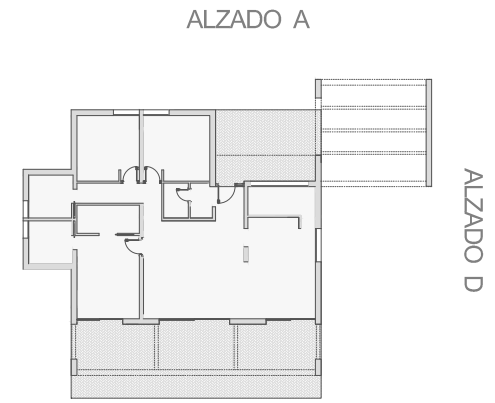
SUPERFÍCIE CONSTRUIDA TOTAL: 150 m<sup>2</sup>



ALZADO A



ALZADO B



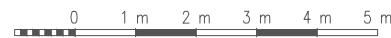
ALZADO A

ALZADO B

ALZADO D

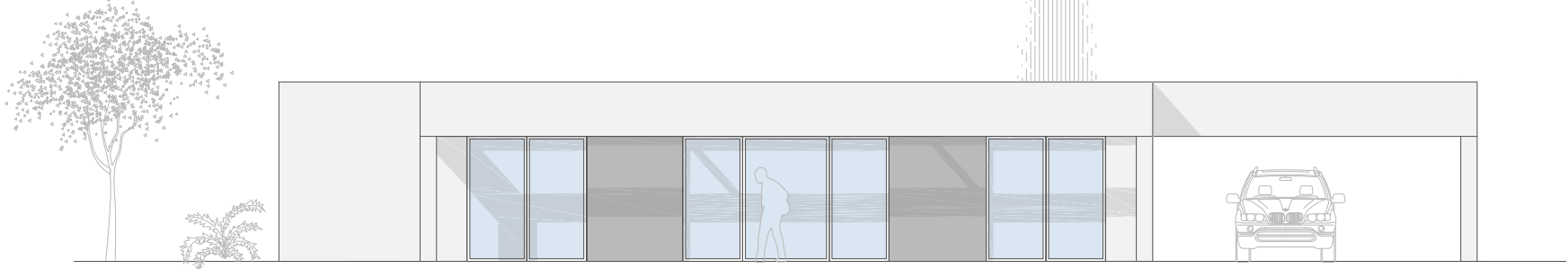
ALZADO C

THE CONCRETE  
HOME

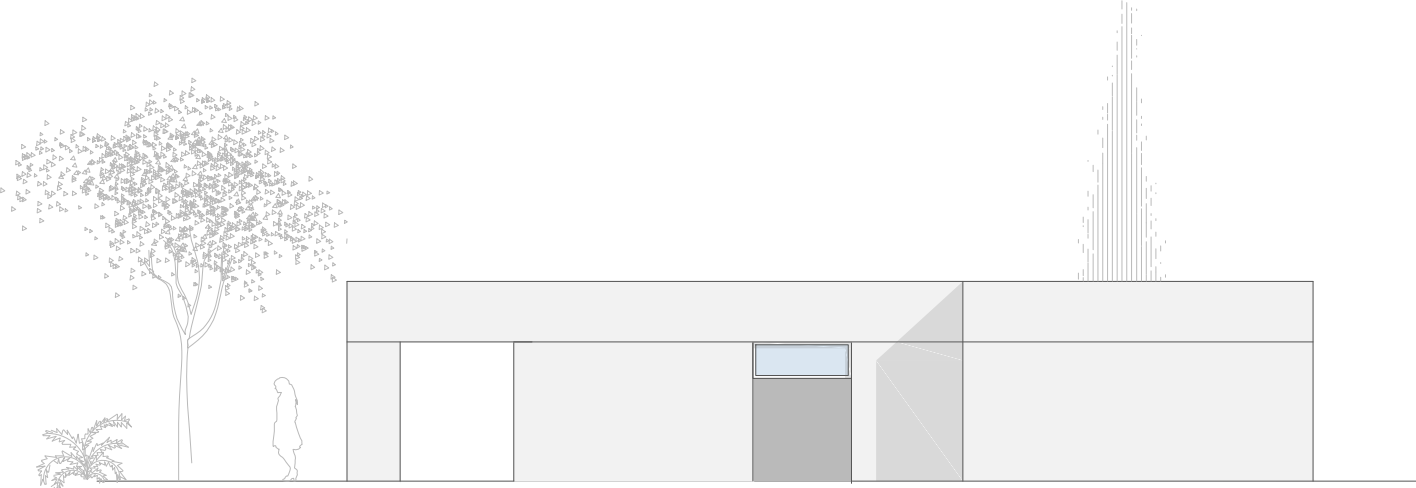


# Modelo **Barcelona**

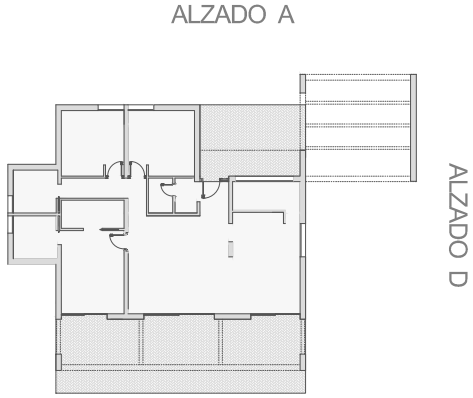
SUPERFÍCIE CONSTRUIDA TOTAL: 150 m<sup>2</sup>



ALZADO C



ALZADO D



THE CONCRETE  
HOME

